

# Blade Runner Blaster Buttplate Weathering Decal Instruction Guide (that's a mouthful!)

Thank you for your purchase! The following is a guide to applying your buttplate decal to add that extra bit of accuracy to your Blade Runner blaster.





The real prop has a very distinctive scratch pattern on the buttplate. This is the effect we'll be trying to achieve. (photo of screen-used blaster courtesy of Karl Tate. *Used with permission.*)



Please note these decals are printed on very thin clear plastic and are machine cut. I intentionally made them slightly larger than the buttplate so they can be trimmed to fit and therefore not have a visible edge.





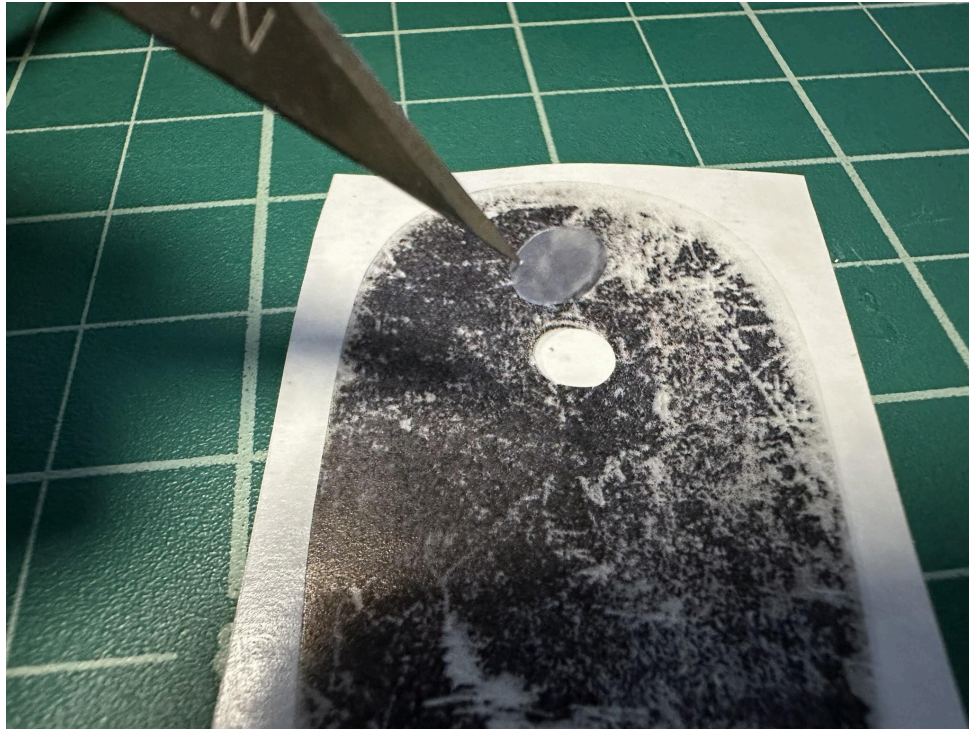
Step 1. Make sure any paint is removed from the bottom of the buttplate. Then clean it thoroughly with alcohol to remove any oils. You can also optionally rub it with steel wool to dull the finish a bit to mimic the worn look of the real prop.



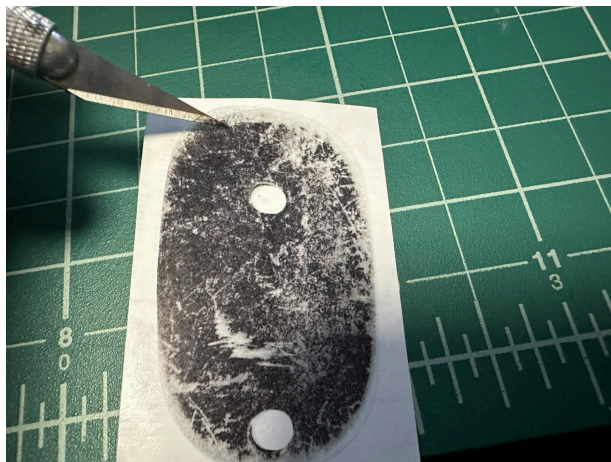
Step 2. Peel the border off and discard it so the decal is easier to remove.



Step 3. Using a sharp hobby knife, remove the two screw hole circles from the decal. These are already cut, so just poke them with the tip of the blade and lift them up. Discard these.



Step 4. Using the tip of the hobby knife, carefully lift up the decal being careful not to touch the sticky side with your fingers. The decals are clear so any fingerprints will show through.





Step 5. Carefully place the decal onto the buttplate, using the screw holes as an alignment guide. Don't try to line it up by the edges. The decal is intentionally a bit large.



Step 6. Once the decal is laid down in the correct position, use a soft cloth to press it tightly onto the butt plate. Work your way out from the center to prevent capturing any wrinkles or bubbles.



Step 7. Using your hobby knife, carefully trim any overhang by gently scraping the blade along the edge of the buttplate. It is important to use a brand new, sharp blade to ensure it doesn't snag or tear the decal, leaving a rough edge.



Step 8. If needed, do the same to the screw hole areas if there are any overhanging bits.





All done! Here's the final result.

